



[WWW.KNOWLEDGEEXCELLENCECENTRE.COM](http://WWW.KNOWLEDGEEXCELLENCECENTRE.COM)

# ABOUT THE **KNOWLEDGE EXCELLENCE CENTRE**

---

The Knowledge Excellence Centre (KEC) offers a platform for conducting multi-disciplinary management training programmes to corporates, not-for-profit, and government institutions.

The 15-acre campus, nestled in lush greens, provides multiple training venues, multi-purpose halls and accommodation for up to 250 delegates and dignitaries.

Housed with all modern amenities befitting a premier institution, the KEC also has a library, gymnasium, swimming pool, space for recreational activities, and a helipad.



# PROGRAMMES & ACTIVITIES

---

The KEC is well equipped to facilitate :

- Orientation Workshops
- Business Meetings
- Training Programmes
- Brainstorming Sessions
- Team Building Activities



# TRAINING FACILITIES



## TRAINING HALLS

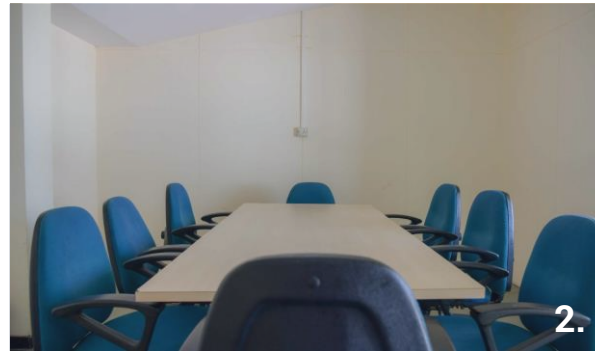
The halls are primarily meant for training, education session, etc. The halls are well equipped with a projector screen and provide ample space for the lecturer to move around the room and interact closely with all delegates and students. It creates the environment of a classroom thereby facilitating qualitative learning by the delegates.

## SEATING CAPACITY



- Training Hall 1 – 50 Seats
- Training Hall 2 – 50 Seats
- Training Hall 3 – 25 Seats

# TRAINING FACILITIES



## DISCUSSION ROOMS

The Discussion Rooms at KEC are best suited for small gatherings. Ideal for small group discussions or group work requirements when used in conjunction with the Training Halls and Auditoriums.

The discussion rooms are also available for team discussions and group breakout sessions done as part of larger workshops.

## SEATING CAPACITY



- Discussion Room 1 – 16 Seats
- Discussion Room 2 – 8 Seats
- Discussion Room 3 – 8 Seats

# CONFERENCE HALLS

---



## RAJA SHIVAJI AUDITORIUM

---

Raja Shivaji Auditorium is a free seating hall, allowing flexible seating options suited for various types of conferences, seminars, workshops, and trainings. The auditorium accommodates up to 200 delegates.

The auditorium is well equipped with modern amenities such as carpeted flooring, air conditioning, projector, variable lighting, stage lighting, sound system, etc.



## PT. DEENDAYAL HALL

---

Pt. Deendayal Hall (non-AC) has large glass windows opening onto the open green area outside. The hall permits free seating for various kinds of programmes. The open floor facilitates various kind of team building and group activities. The hall accommodates up to 400 delegates.

The Pt. Deendayal hall is specially suited for large group activities in a workshop format and can be resourcefully used for team briefings, etc.



# SEMINAR ROOMS

---



## ARYA CHANAKYA BOARDROOM

---

The Arya Chanakya Boardroom is a 30-seater fixed-seating boardroom comparable to most well-appointed corporate board rooms. Available for group discussions, meetings, seminars, brainstorming sessions, etc.

The wood-paneled walls, comfortable seating, individual speaker microphones, central lighting, projector screen, and easily accessible entry to the central well facilitates easy interaction with delegates.



## TAKSHASHILA CONFERENCE ROOM

---

The Takshashila Conference Room is a 50-seater fixed-seating room with excellent acoustics and state-of-the-art multimedia facilities. Ideal for large seminars, corporate presentations, press interactions, product launches etc.

The room is equipped with latest projection equipment and sound systems to facilitate interaction between delegates and presenters.

# ACCOMMODATION FACILITIES



## VYASKUL

Vyaskul Rooms are a luxury accommodation meant for dignitaries, resource persons, and other visiting VIPs.

Equipped with most modern amenities, it is on a high point overlooking the KEC campus.

Vyaskul has had the honor of hosting ex-Presidents, Prime Ministers and other VIPs on their visit to the Knowledge Excellence Centre for various programmes.



## ACCOMMODATION CAPACITY



- Vyaskul Deluxe (AC) – 4 Rooms
- Vyaskul Suite (AC) – 2 Rooms



# ACCOMMODATION FACILITIES

---



## EKLAVYA

---

Eklavya Rooms are built as air conditioned cottages with an accommodation capacity of 3 delegates per cottage.

The cottages also have a separate seating area for 4 people to facilitate interactions between the participants and also post-schedule exchange of thoughts and ideas..

The beautiful interiors and availability of modern amenities add to the experience.



## ACCOMMODATION CAPACITY



- Eklavya (AC) – 24 Rooms

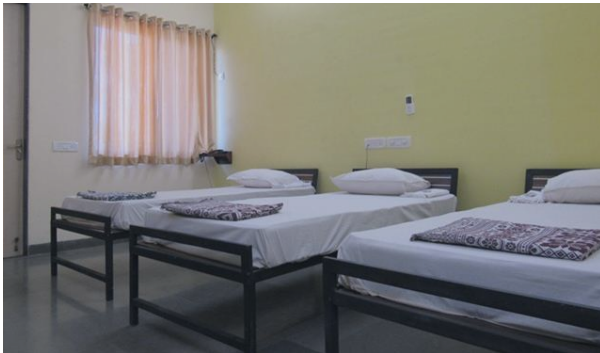
# ACCOMMODATION FACILITIES



## EKATMA BHAVAN

Ekatma Bhavan has AC and Non-AC rooms available for accommodation of participants of programmes being conducted at the Knowledge Excellence Centre.

The Ekatma Bhavan being the most recently constructed accommodation facility in the KEC Campus is also the crowning jewel of the campus by way of its design and aesthetics



## ACCOMMODATION CAPACITY



- Ekatma Bhavan (AC) – 36 Rooms
- Ekatma Bhavan (Non-AC) – 36 Rooms

# ACCOMMODATION FACILITIES

---



## SANDIPANI

---

Sandipani has Executive Rooms available as accommodation for delegates participating in the programs being conducted at the Knowledge Excellence Centre.

The beautiful interiors and availability of modern amenities add to the experience.



## ACCOMMODATION CAPACITY



- Sandipani (AC) – 3 Rooms

# DINING HALLS

---

SHABARI DINING HALL-1



SHABARI DINING HALL-2



AASWAD DINING HALL





# RECREATION FACILITIES

---

LIBRARY & RESEARCH CENTRE



SWIMMING POOL



OPEN-AIR AMPHITHEATRE



# RECREATION FACILITIES

---

INDOOR & OUTDOOR **GYMNASIUM**



INDOOR **GAMES AREA**



MEDITATION & **YOGA**





# NEARBY **ATTRACTIONS**

---

GLOBAL VIPASSANA  
**PAGODA**



ESSELWORLD &  
**WATER KINGDOM**



GORAI **BEACH**



KESHAV **SRUSHTI**



# OUR CLIENTELE



# CONTACT US

Although situated in idyllic surroundings, the KEC is easily accessible.

## Distances:

Mumbai airport : 35 kms  
Bhayander railway station : 12 kms  
Thane : 32 kms

## Knowledge Excellence Centre

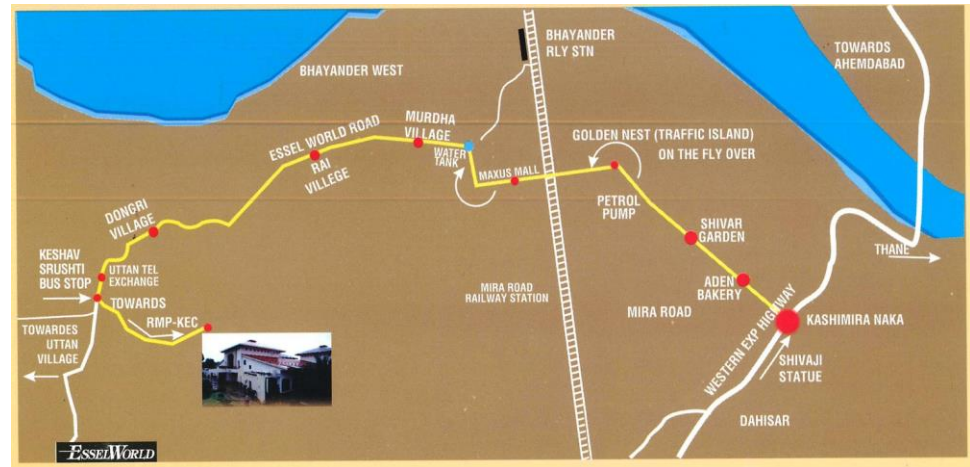
Rambhau Mhalgi Prabodhini  
Keshav Srushti, Esselworld Road,  
Uttan Village, Bhayander (West),  
Thane 40116, Maharashtra, India.

+ 91 22-2845 0101/2/3

+91 98337 18350

[www.knowledgeexcellencecentre.com](http://www.knowledgeexcellencecentre.com)

guestrelations@rmponweb.org





[WWW.KNOWLEDGEEXCELLENCECENTRE.COM](http://WWW.KNOWLEDGEEXCELLENCECENTRE.COM)